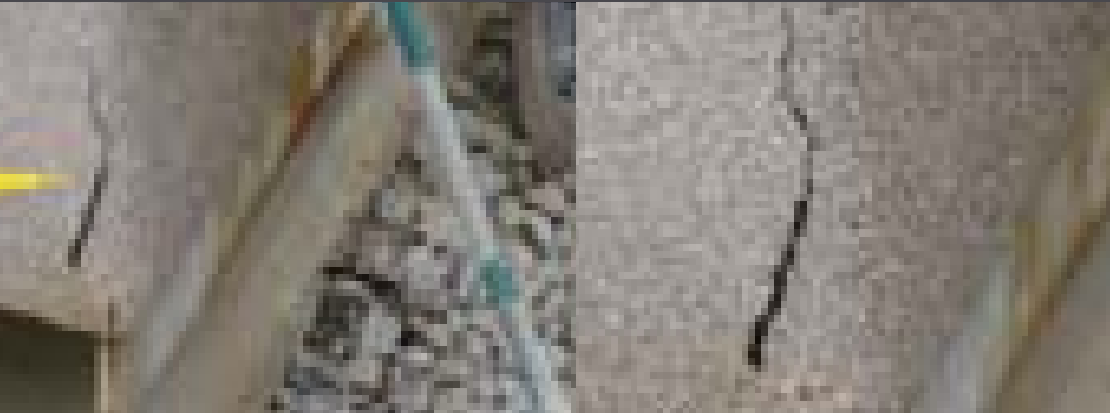


LIGHT INDUSTRIAL CASE STUDY

UTILITY BUILDING



1 SITUATION

There is a wide variety of configurations and materials commonly used in the fabrication and construction of utility buildings. But they all have one thing in common, the need protection from the elements. Whether concrete, steel, wood, aluminum or fiberglass, Mother Nature will find a way to break into any structure. Valuable equipment can be exposed to dirt, moisture and pests that can damage or destroy your assets, requiring premature repair or replacement.

2 PROCEDURE

Cleaning and sanding may be required to remove debris and contaminants. Cracks and holes will be filled or repaired prior to the application of LINE-X®. Some jobs may involve more in depth preparation to ensure a successful application.

3 SOLUTION

A seamless, durable barrier to the elements seal out the harmful effects of dirt and moisture, extending the lifespan of any enclosure and the valuables store inside.

4 RESULTS

Dramatically reduced maintenance and repair costs, both to the structure and equipment. With a permanently bonded, water-tight barrier the structure will enjoy numerous years of maintenance-free operation and out-of-pocket savings.

